

**Unit Size**

100 µL concentrated

**Price**

320€

**Storage**

Store at 4°C short term. Aliquot and store at -20°C long term. Avoid freeze-thaw cycles.

**Applications**

WB, ELISA, IHC, LF, FC

**Species**

Human

**Host**

Mouse

**Clonality**

Monoclonal

**Purity**

Purified by hydrophobic interaction chromatography through ammonium sulfate from HS-8 hybridoma culture supernatant

**Preservative**

Sodium Azide

**Ig Isotype**

IgG-K1

Updated 14/07/2015

**Specificity/Sensitivity**

This product is specific for Total PSA.

**Recommended Dilutions**

Western Blot 1:50-1:100, ELISA 1:50-1:300, Immunohistochemistry 1:3000, Flow cytometry 1:25

**Buffer System**

 PBS 10 mM, NaN<sub>3</sub> 0.1%, pH 7.3

**Application Notes**

This antibody is useful in ELISA, Immunohistochemistry (IHQ), Western Blot (WB), Lateral Flow (LF), Flow cytometry (FC) and immunoassays.

**References**

IHQ: Tumor Bank of HUCA- Oviedo, Asturias, Spain (Galván JA)

WB: Morphology and Cell Biology Department, Faculty of Medicine - Oviedo, Asturias, Spain (Miar AB).

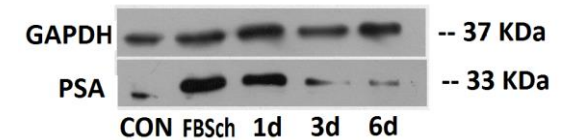
ELISA, immunoassays: Immuno-electroanalysis Group, Faculty of Chemistry - Oviedo, Asturias, Spain (Costa A).

LF: Nanobioanalysis Group, Faculty of Chemistry - Oviedo, Asturias, Spain (Blanco MC).

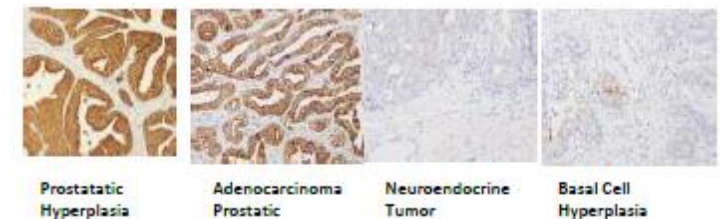
LC: Immunology Service of HUCA – Oviedo, Asturias, Spain (Baragaño A).

**Images**

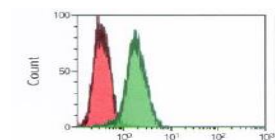
**Western Blot:** Housekeeping (GAPDH, charge control to verify that the differences are due to treatment and not to the charge); The experiment was performed in androgen-dependent LNCaP cells treated with androgen deprivation 1, 3 and 6 days. The result is positive to decrease expression of PSA. (FBSch: treatment that removes androgen; CON: control)



**Immunohistochemistry:** HS8 antibody. Tissues displayed cytoplasmic staining of variable intensity (0 to 3). Strong staining was seen in prostatic hyperplasia (intensity 3) and well-differentiated adenocarcinoma prostatic (both intensity 3). Neuroendocrine tumor negative for PSA and basal cell hyperplasia tissue were weakly stained or negative (both intensity 0)



**Flow Cytometry:** The experiment was performed using 250,000 cells from DU 145 cells, using as label FITC. An intracellular staining has been performed with anti-PSA (HS8) antibody (green histogram) or with anti-mouse IgG (red histogram).


**Notes**

Manufactured by "Unidad de Ensayos Biotecnológicos y Biomédicos" (Servicio Científico-Técnicos - University of Oviedo)

Proprietary: HEALTHSENS S.L.