

Unit Size

100 µL concentrated

Price

320€

Storage

Store at 4°C short term. Aliquot and store at -20°C long term. Avoid freeze-thaw cycles.

Applications

WB, ELISA, IHC, LF, FC

Species

Human

Host

Mouse

Clonality

Monoclonal

Purity

Purified by hydrophobic interaction chromatography through ammonium sulfate from HS-1 hybridoma culture supernatant

Preservative

Sodium Azide

Ig Isotype

IgG-K1

Updated 14/07/2015

Specificity/Sensitivity

This product is specific for Free PSA.

Recommended Dilutions

Western Blot 1:50-1:100, ELISA 1:50-1:300, Immunohistochemistry 1:3000, Flow cytometry 1:2

Buffer System

 PBS 10 mM, NaN₃ 0.1%, pH 7.3

Application Notes

This antibody is useful in ELISA, Immunohistochemistry (IHQ), Western Blot (WB), Lateral Flow (LF), Flow cytometry (FC) and immunoassays.

References

IHQ: Tumor Bank of HUCA- Oviedo, Asturias , Spain (Galván JA)

WB: Morphology and Cell Biology Department, Faculty of Medicine - Oviedo, Asturias, Spain (Miar AB).

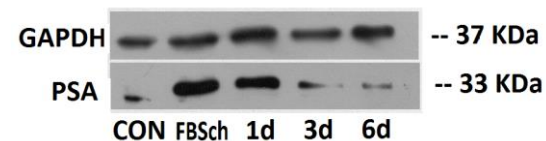
ELISA, immunoassays: Immuno-electroanalysis Group, Faculty of Chemistry - Oviedo, Asturias, Spain (Costa A).

LF: Nanobioanalysis Group, Faculty of Chemistry - Oviedo, Asturias, Spain (Blanco MC).

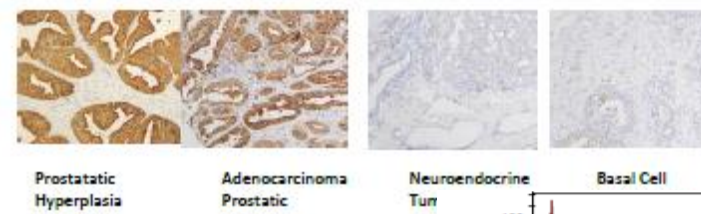
LC: Immunology Service of HUCA – Oviedo, Asturias, Spain (Baragaño A).

Images

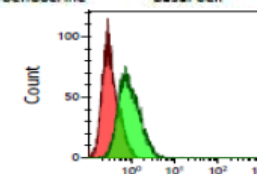
Western Blot: Housekeeping (GAPDH, charge control to verify that the differences are due to treatment and not to the charge); The experiment was performed in androgen-dependent LNCaP cells treated with androgen deprivation 1, 3 and 6 days. The result is positive to decrease expression of PSA. (FBSch: treatment that removes androgen; CON: control)



Immunohistochemistry: HS1 antibody. Tissues displayed cytoplasmic staining of variable intensity (0 to 3). Strong staining was seen in prostatic hyperplasia (intensity 3) and well differentiated adenocarcinoma prostatic (both intensity 3). Neuroendocrine tumor negative for PSA and basal cell Hyperplasia tissue were weakly stained or negative (both intensity 0)



Flow Cytometry: The experiment was performed using 250.000 cells from DU 145 cells, using as label FITC. An intracellular staining has been performed with anti PSA (HS1) antibody (green histogram) or with anti-mouse IgG (red histogram).


Notes

 Manufactured by "Unidad de Ensayos Biotecnológicos y Biomédicos" (Servicio Científico-Técnicos - University of Oviedo)
 Proprietary: HEALTHSENS S.L.